

KARIBAN

K6128

Men's lightweight hooded padded parka

- Long parka with a casual sportswear look.
- Ribbed cuffs to prevent the cold from entering the sleeves.
- Warm, comfortable and ultra-lightweight.

100% polyamide. Polyester inner padding. Warm and ultra-lightweight. Zipped and piped 2 front pockets and 1 chest pocket. Two-way zip fastening concealed beneath studded placket. Ribbed inner neck and cuffs. Contrasting inner hood and body: Convoy Grey for Black. Inner hood and body in matching tones: Navy for Navy. Average weight size L : 765g.



More information

Logistic



Country of origin



BD - Bangladesh
CN - China

Customs code



62014010



Also available in version



K6129

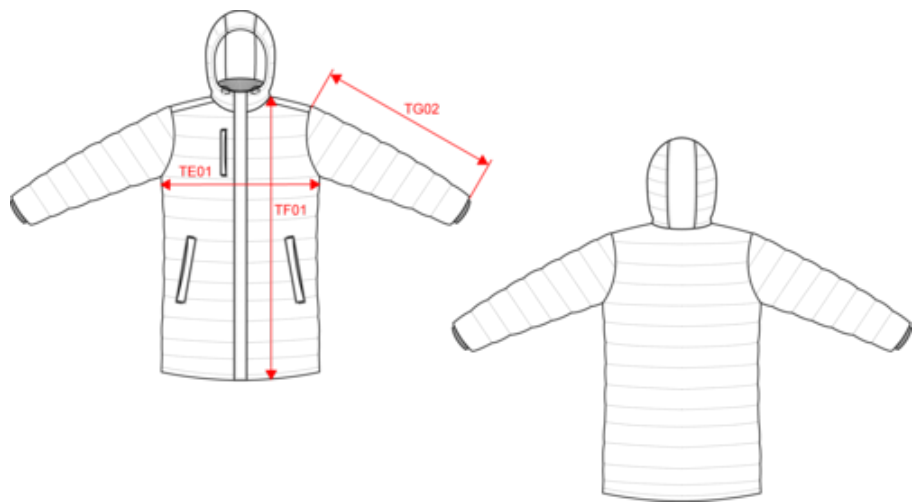


KARIBAN

K6128

Men's lightweight hooded padded parka

Dimensions (cm)



Measurements in cm	XS	S	M	L	XL	XXL	3XL
TE01 - 1/2 chest width at 1.5cm below armhole	52.00	55.00	58.00	61.00	64.00	67.00	70.00
TF04 - Back total height from HSP	78.00	80.00	82.00	84.00	86.00	88.00	90.00
TG02 - Long sleeve length	65.00	66.00	67.00	68.00	69.00	70.00	71.00

KARIBAN

K6128

Men's lightweight hooded padded parka

Colours information



Black
RVB : 35,35,37
Pantone C : Black
Pantone TCX : 19-4004TCX



Navy
RVB : 41,46,56
Pantone C : 433C
Pantone TCX : 19-4012TCX

Logistic



1



10

Sizes	Width (cm)	Height (cm)	Length (cm)	Net weight (kg)	Gross weight (kg)	Pieces/Box	Pieces/Bundle
XS	40.00000	40.00000	60.00000	6.80000	8.00000	10	1
S	40.00000	40.00000	60.00000	7.10000	8.30000	10	1
M	40.00000	40.00000	60.00000	7.30000	8.50000	10	1
L	40.00000	40.00000	60.00000	7.70000	8.90000	10	1
XL	40.00000	40.00000	60.00000	8.10000	9.30000	10	1
XXL	40.00000	40.00000	60.00000	8.60000	9.70000	10	1
3XL	40.00000	40.00000	60.00000	9.00000	10.20000	10	1